

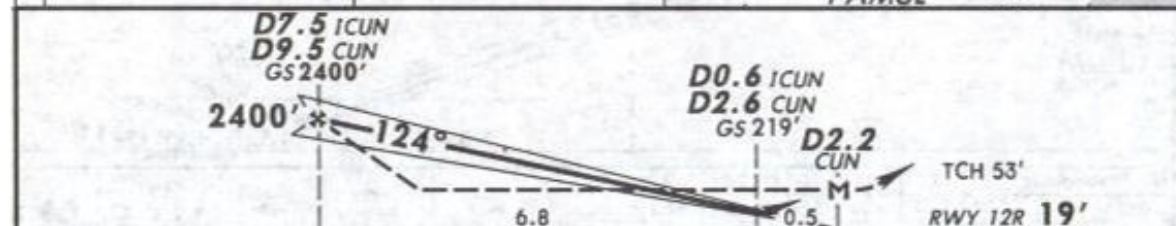
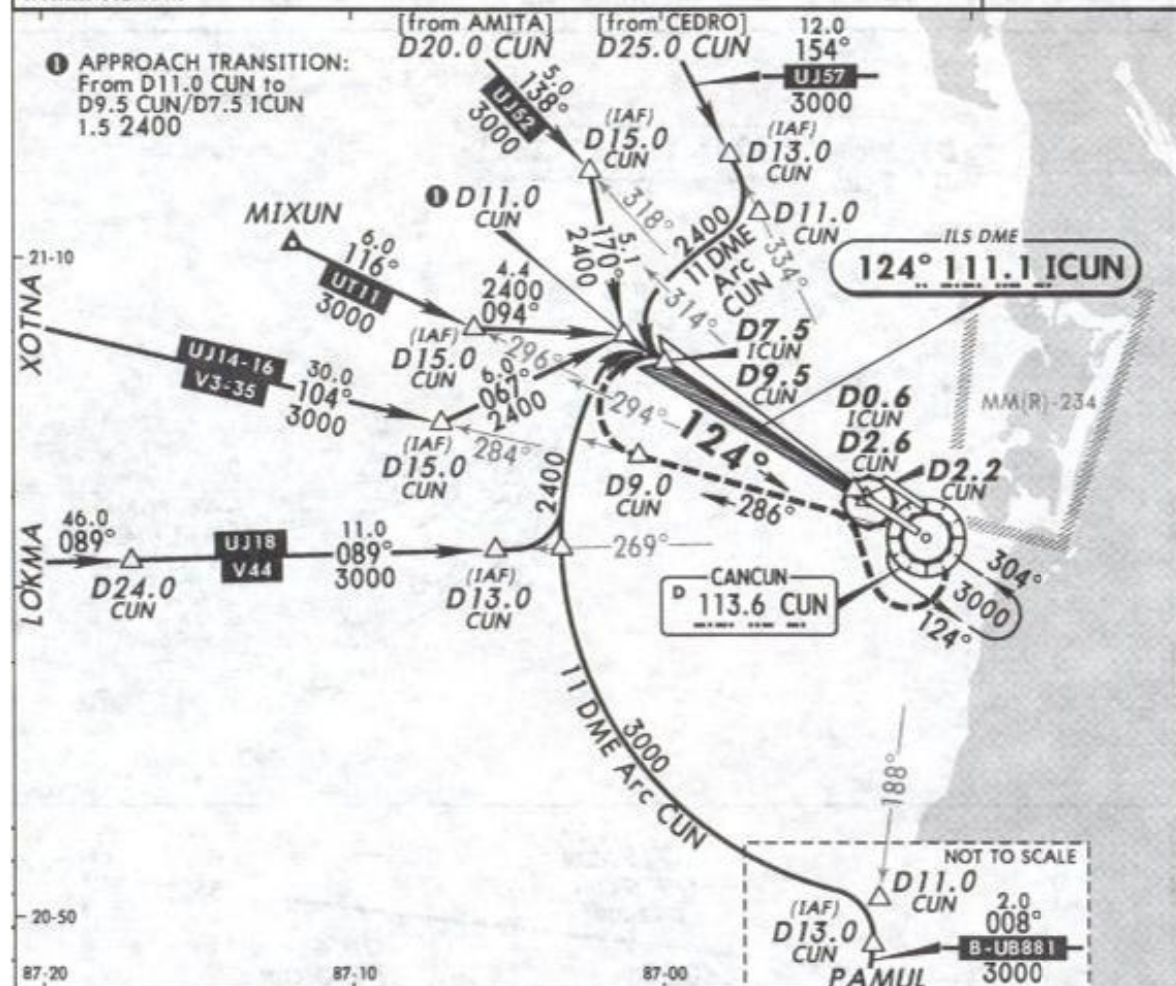
MMUN/CUN CANCUN INTL

13 NOV 09

(11-6)

CANCUN, MEXICO ILS DME or LOC 3 Rwy 12R

*ATIS 127.7	*CANCUN Approach (R) 121.1	CANCUN Arrival 123.2	CANCUN Tower 118.6	*Ground 121.7
LOC ICUN 111.1	Final Apch Crs 124°	GS D7.5 ICUN D9.5 CUN 2400' (2381')	ILS DA(H) (CONDITIONAL) 219' (200')	Apt Elev 20' Rwy 12R 19'
<p>MISSED APCH: RIGHT turn to intercept CUN VOR R-286 outbound to D9.0 CUN, then turn RIGHT to intercept CUN VOR R-304 inbound at D9.5 CUN to CUN VOR to the minimum holding altitude.</p> <p>Alt Set: MB (IN on req) Rwy Elev: 1 MB Trans level: FL 195 Trans alt: 18500'</p> <p>1. DME/ILS usable with DME equipped aircraft with accurate instrument reading within 0.2 NM.</p>				
				2000'
				MSA CUN VOR



Gnd speed-Kts	70	90	100	120	140	160	ALS	CUN 113.6 to D9.0 R-286 CUN
GS	3.00*	377	484	538	646	753	REIL PAPI	
MAP at D2.2 CUN								
STRAIGHT-IN LANDING RWY 12R								CIRCLE-TO-LAND
ILS				LOC (GS out)				Not Authorized Northeast of Rwy 12R/30L
DA(H) 219' (200')				MDA(H) 420' (401')				MDA(H)
FULL				ALS out				Max Kts
A								90
B								120
C	1/2	3/4		3/4		1		140
D				1		1 1/4		165
ALL Non Skd	DA(H) 271' (252')			1 1/4		1 1/2		
	3/4	1						

CHANGES: TDZE removed, transition altitude.

© JEPPESEN, 2009. ALL RIGHTS RESERVED.